



# CROWD PLUS

We specialize in social media engagement, follower growth strategies, influencer marketing, content creation, paid advertising, brand awareness campaigns, social media analytics, and community management.

[www.Crowdplus.live](http://www.Crowdplus.live)





# About **Crowd Plus** Pool

Crowd Plus Company is a dynamic digital engagement agency specializing in creating awareness and driving traffic for online products. We harness the power of social media to connect brands with their target audience, enhancing visibility, engagement, and brand loyalty. With a strategic approach, we help businesses grow their digital footprint by leveraging influential social media users and targeted campaigns.

❖ **Our Expertise**

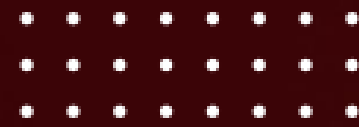
❖ **Our Experience**

❖ **Our Philosophy**

❖ **Our Commitment to Results**







## Why choose **Crowd plus?**

We create **meaningful digital connections** that drive brand growth. Through **targeted campaigns, influencer partnerships, and data-driven strategies**, we help businesses **boost visibility, engagement, and conversions**. Our **precision targeting and real-time analytics** ensure maximum impact and ROI. With a **proven track record** of success, we offer **customized solutions** to elevate your brand in the digital space. Choose **Crowd Plus Company** and let's grow your online presence together!





## Our Mission

Our mission is to empower businesses by amplifying their online presence through innovative social media engagement strategies. We strive to create meaningful interactions that drive real results, increasing brand awareness and customer reach.

## Our Vision

We envision a digital landscape where businesses of all sizes can thrive through effective and organic audience engagement. Our goal is to be the leading force in social media-driven marketing, fostering authentic connections between brands and consumers.



# Media Packages

1

Package

**\$50**

2

Package

**\$100**

3

Package

**\$150**

4

Package

**\$200**

5

Package

**\$250**

6

Package

**\$300**

7

Package

**\$350**

8

Package

**\$400**

9

Package

**\$450**

10

Package

**\$500**



# Income Structure



**Promo  
Gain**



**Matching  
Bonus**



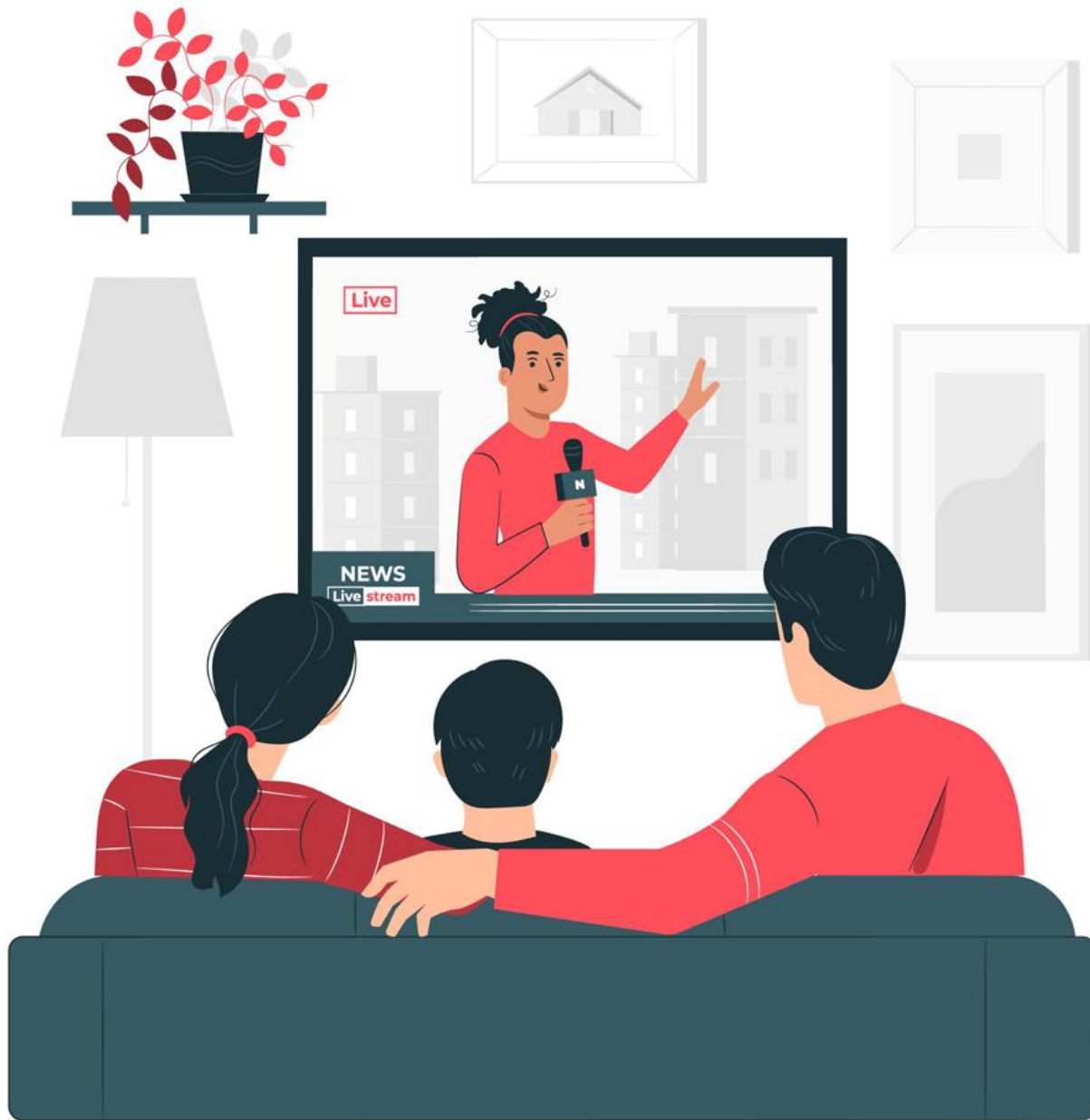
**Rank  
Bonus**



**Salary  
Bonus**



**Global leg  
Bonus**



# Watch Video & Earn Money

## How it's work?

Discover how you can earn money by simply watching videos!

- Sign up on crowd plus platform that reward you for watching Ads.
- Complete tasks such as watching ads, product reviews, or promotional videos.
- Get paid for your time and engagement!





## Promo Gain-PG Bonus (1%)

### Flat Package

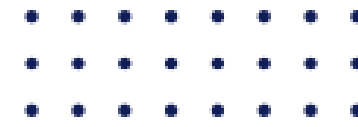
- 0.5% Promo Gain on Media Package
- Gain will be credited in income wallet

### Advance Package

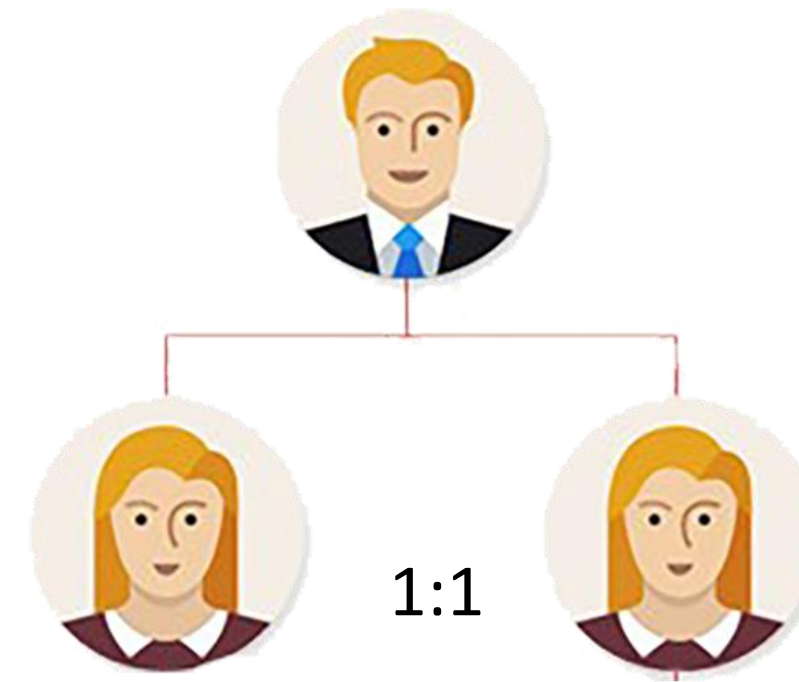
- 1% on Promo Gain on Media Package

❖ Promo Gain capping is **200%**

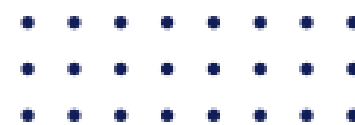




# Matching Bonus



- 5% Matching Bonus
- 2 Active direct are compulsory





# Rank Bonus (On Promo Gain)

Rank	Gain Bonus	Total Business	Self Package
1	15%	-	\$50
2	20%	\$1 K	Or Pack \$150
3	25%	\$2.5 K	Or Pack \$200
4	30%	\$5 K	Or Pack \$500
5	35%	\$10 K	-
6	40%	\$25 K	-
7	45%	\$50 K	-
8	50%	\$100 K	-
9	55%	\$250 K	-

Rank	Gain Bonus	Total Investment	Self Package
10	60%	\$500K	-
11	65%	\$1 M	-
12	70%	\$2.5 M	-
13	75%	\$5 M	-
14	80%	\$10 M	-
15	85%	\$50 M	-
16	90%	\$100 M	-
17	95%	\$500 M	-
18	100%	\$1 B	-

➤ **50% business from Power Leg, and 50% from all other legs.**



# Salary Bonus

S.No.	Business	Salary Bonus	For 100 Days
1	\$2.5 K	\$50	\$0.5
2	\$5 K	\$100	\$1
3	\$25 K	\$2,500	\$25
4	\$100 K	\$10,000	\$100
5	\$1 M	\$100,000	\$1,000
6	\$10 M	\$250,000	\$2,500
7	\$1 00M	\$10,00,000	\$10,000

- **40% business volume from Long Leg A.**
- **40% business volume from Long Leg B.**
- **20% from rest of all legs.**



# Global Single Leg Bonus

- The system considers the next 10 activations after your activation.
- 10% of income from Daily PG Bonus, Rank Bonus, and Salary Bonus is distributed across 10 levels:

Level	Percentage Earned
Level 1	10%
Level 2	10%
Level 3	10%
Level 4	10%
Level 5	10%
Level 6	10%
Level 7	10%
Level 8	10%
Level 9	10%
Level 10	10%



# Capping

## Promo Gain Earnings

Promo Gain Earnings are capped at **2X (200%)** of the initial investment.

2X

## Total Earnings

Total Earnings is capped at **3X (300%)**

3X





# Wallets

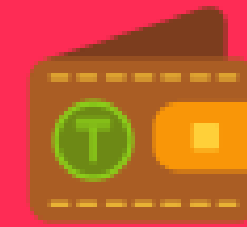
The system operates with three types of wallets:



**Income Wallet**



**Package Wallet**



**USDT Wallet**





## Income Wallet

- **50% of all income** is credit to the Income Wallet.
- Funds can be transferred to the **Package Wallet** in multiples of **\$10**.
- Direct withdrawal from the Income Wallet is possible with **10% deduction**.

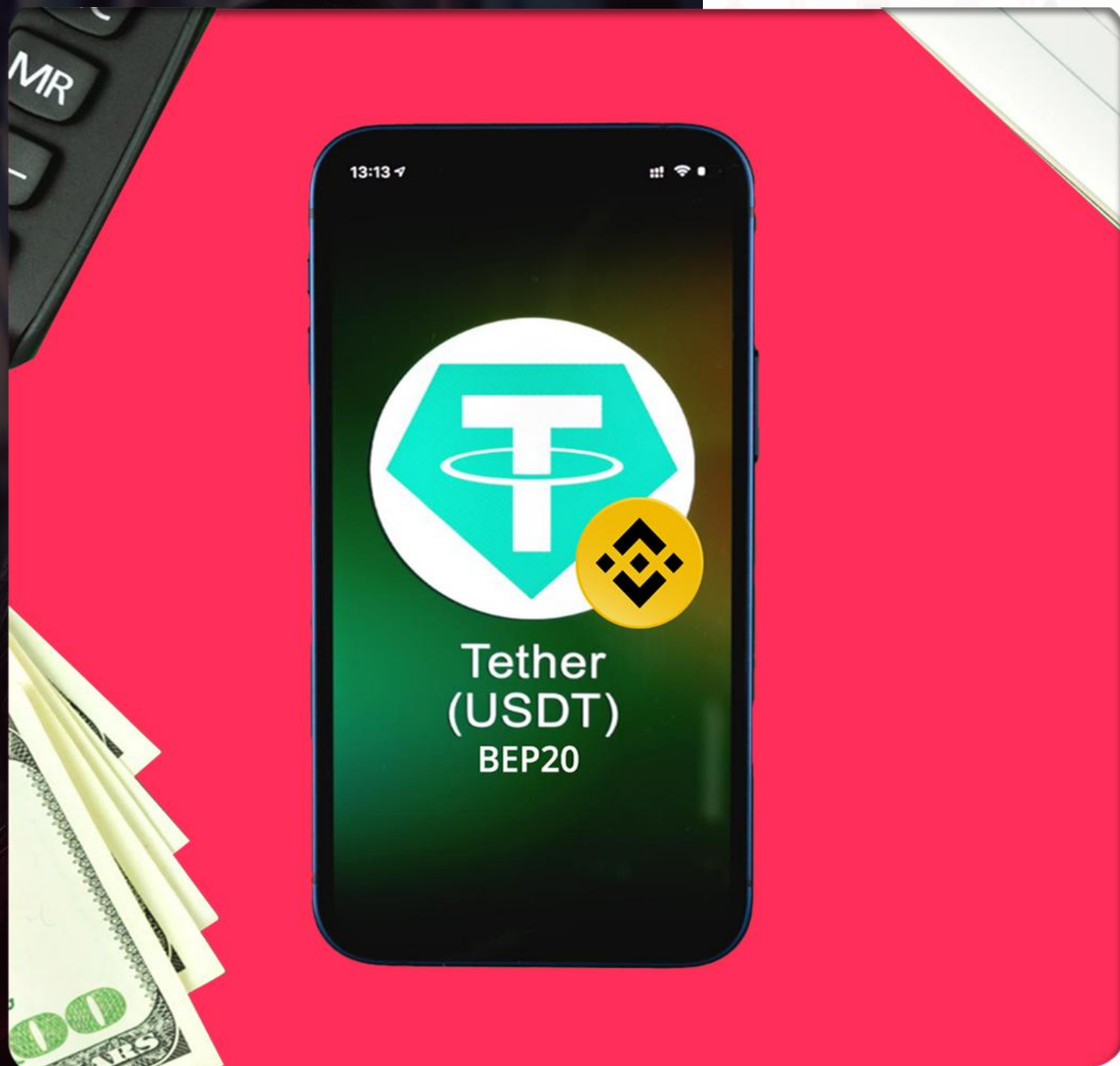




## Package Wallet

- 50% of all income is credit to the **Package Wallet**.
- Funds can be transferred to another **user ID** with a **Deduction of 2%**, in multiples of **\$10**.
- The Package Wallet can be used for ID activation.
- with 50% funds from this wallet and the remaining **50% from the USDT Wallet**.





## USDT Wallet

- **All deposits** are credited to the USDT Wallet.
- Funds can be transferred to any **user ID** without deductions.
- The USDT Wallet can be used for **ID activation with 100% funds.**







# Withdrawals

- Funds from the **Income Wallet** can be withdrawn at any time in multiples of **\$10**.
- **10%** withdrawal charges apply.



# CONTACT US



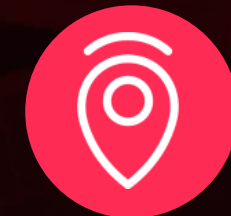
## Email

[support@crowdplus.live](mailto:support@crowdplus.live)



## Website

[www.crowdplus.live](http://www.crowdplus.live)



## Location

150 Molesworth Street,  
Wellington, New Zealand





# Thank You

For Your Attention

[www.crowdplus.live](http://www.crowdplus.live)